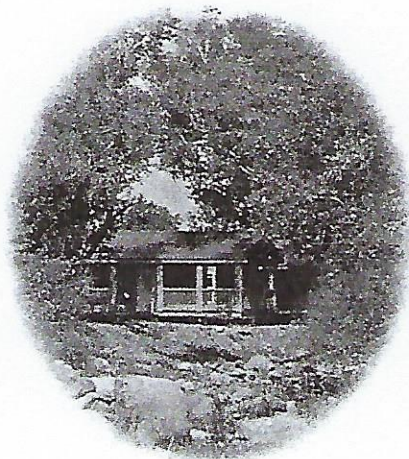




The Cabins

at Zane Grey RV Village

4500 East State Route 260
Camp Verde, AZ 86322
928-567-4320



Cabin Rental Information

All cabins are fully furnished and stocked with basic kitchen utensils, coffee maker, microwave, appliances, toaster, flat screen tvs, toiletries, paper products, bath towels and bed linens. Fresh towels and linens will be exchanged weekly on multiple week stays. BBQ and ironing board available upon request.

Prices*

	Peak Season**			Off Season***		
	Daily	Weekly	Monthly	Daily	Weekly	Monthly
Cabin no loft	\$119.00	\$699.00	\$1,299.00	\$89.00	\$529.00	\$999.00
Cabin w/loft	\$139.00	\$799.00	\$1,499.00	\$109.00	\$629.00	\$1,199.00

*All monthly rates are plus electric.

**Peak Season Months: February, March, April, May, September, October

***Off Season Months: November, December, January, June, July, August



Minimum reservation is two nights on weekends and three nights on holidays. Monthly stays include all utilities except electricity which is billed at .17 cents per kilowatt hour. All utilities are included in daily and weekly rentals.

Maximum rental time is three months.

Extension: Current guests who would like to extend their stay need to come to the office no later than 10 a.m. to see if the cabin is available.

Reservations do take priority over extension requests.

NOTE: A credit card on file is required upon arrival before keys will be issued.

Check-In

The cabins will be ready for check-in after 3 p.m. on the day of your arrival.

A credit card on file is required upon arrival.

If you are likely to arrive after 5 p.m., please telephone the office prior to 5 p.m. to make after-hours arrangements.

All guests in cabins must be registered with the office.

Check-Out

Cabin check-out is 11 a.m. on the day of departure. Please return your keys to the office.

One full-day charge may be assessed for late check-outs.

Security Deposit on Monthly Stays

*A credit card on file is required upon arrival before keys will be issued.

Occupancy

*The minimum age for check-in is 25. Children are allowed.

*There is a maximum of two people in non-lofted cabins, and 4 to 5 people in lofted cabins.

Pets

*Pets are permitted in certain cabins only. A maximum of two dogs is permitted; sorry, no cats. Dogs may not weigh more than 60 pounds each.

*Pets are not allowed in some cabin types. However, we do allow service animals and a service animal may have stayed in the cabin.

*Pet friendly cabins are subject to availability, so please be sure to give us this information when making your reservation.

*An additional non-refundable flat fee of \$25 per reservation will be charged for all pets.

*Monthly stays will have a \$100 non-refundable pet fee. All dogs must be kenneled when left alone in the cabin.

Smoking is not permitted in any of the cabins or on the covered porches.